

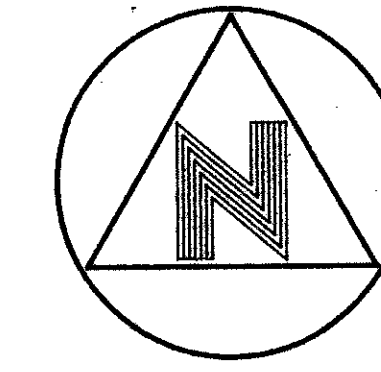
Wycliffe Plat Three

LYING IN SECTION 25, TOWNSHIP 44 SOUTH, RANGE 41 EAST, PALM BEACH COUNTY, FLORIDA

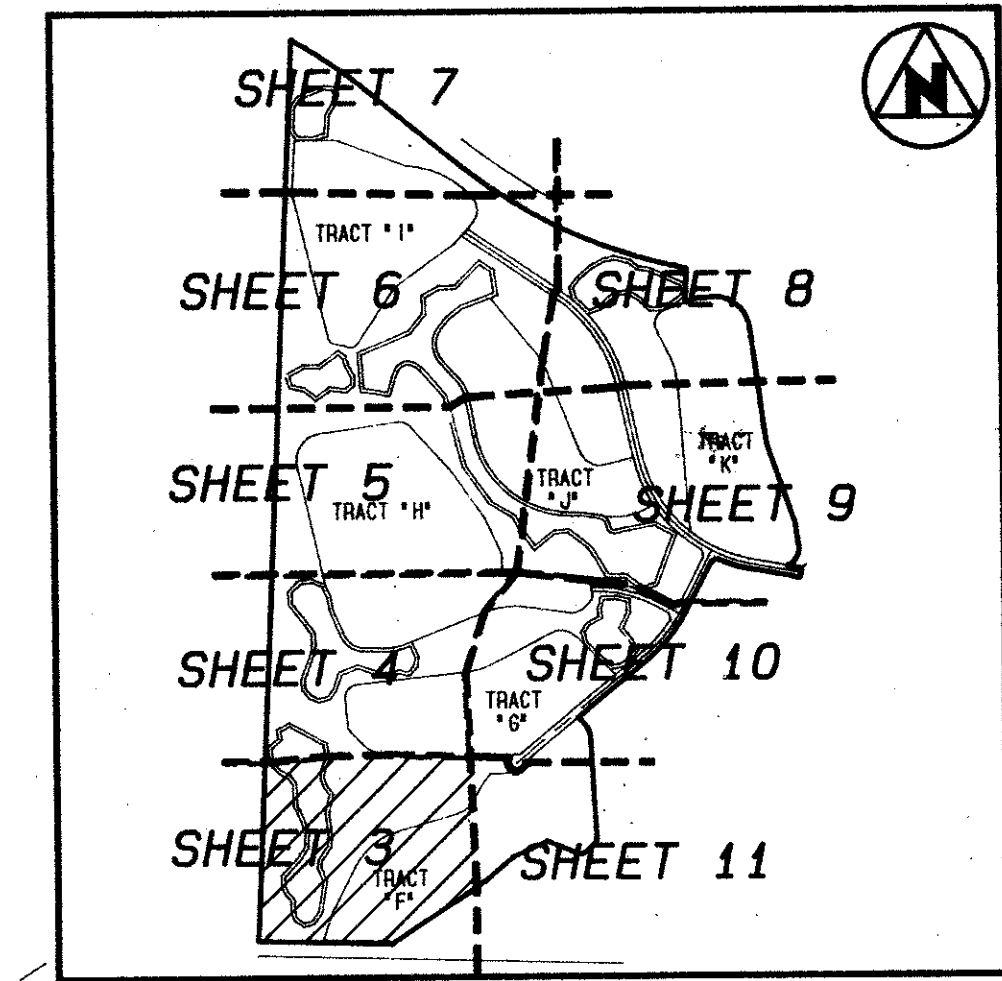
0520-009

SHEET THREE OF ELEVEN

136



GRAPHIC SCALE



KEY MAP (N.T.S.)

(SEE SHEET 4 of 11)

MATCH LINE

MATCH LINE

(SEE SHEET 4 of 11)

MATCH LINE

(SEE SHEET 11 of 11)

MATCH LINE

(SEE SHEET 11 of 11)

TRACT "P"

TRACT "P"

TRACT "F"

TRACT "F"

SUBJECT TO REPLATTING PRIOR TO DEVELOPMENT (17.42 Acres)

TRACT "L-20"
(2.50 Acres)
TO BE MAINTAINED BY WYCLIFFE COMMUNITY ASSOCIATION INC. WITHOUT RECOURSE TO PALM BEACH COUNTY.

TRACT "L-20P"
(1.30 Acres)
TO BE MAINTAINED BY WYCLIFFE COMMUNITY ASSOCIATION INC. WITHOUT RECOURSE TO PALM BEACH COUNTY.

TRACT "P"

WYCLIFFE PLAT ONE
(P.B. 62, Pp. 8-13)

UNPLATTED-
ACME IMPROVEMENT DISTRICT CANAL C-8
(DEED BOOK 1037, PAGE 690)

LEGEND:

- A.I.D.E. INDICATES ACME IMPROVEMENT DISTRICT EASEMENT
- C/L INDICATES CENTERLINE
- O.R.B. INDICATES OFFICIAL RECORDS BOOK
- P.C.P. INDICATES A PERMANENT CONTROL POINT
- Pg. INDICATES PAGE
- Pp. INDICATES PAGE THROUGH PAGE
- P.R.M. INDICATES PERMANENT REFERENCE MONUMENT
- R/W INDICATES RIGHT OF WAY
- SEC. INDICATES SECTION
- MON. INDICATES MONUMENT
- P.B. INDICATES PLAT BOOK

BOOK 69
FLOOD ZONE 8
GUAD #63
SE 86-104
PUD NAME same
PAGE 136
FLOOD MAP #1008
ZONING RTS
ZIP CODE 33467

T&Z=736

69/136

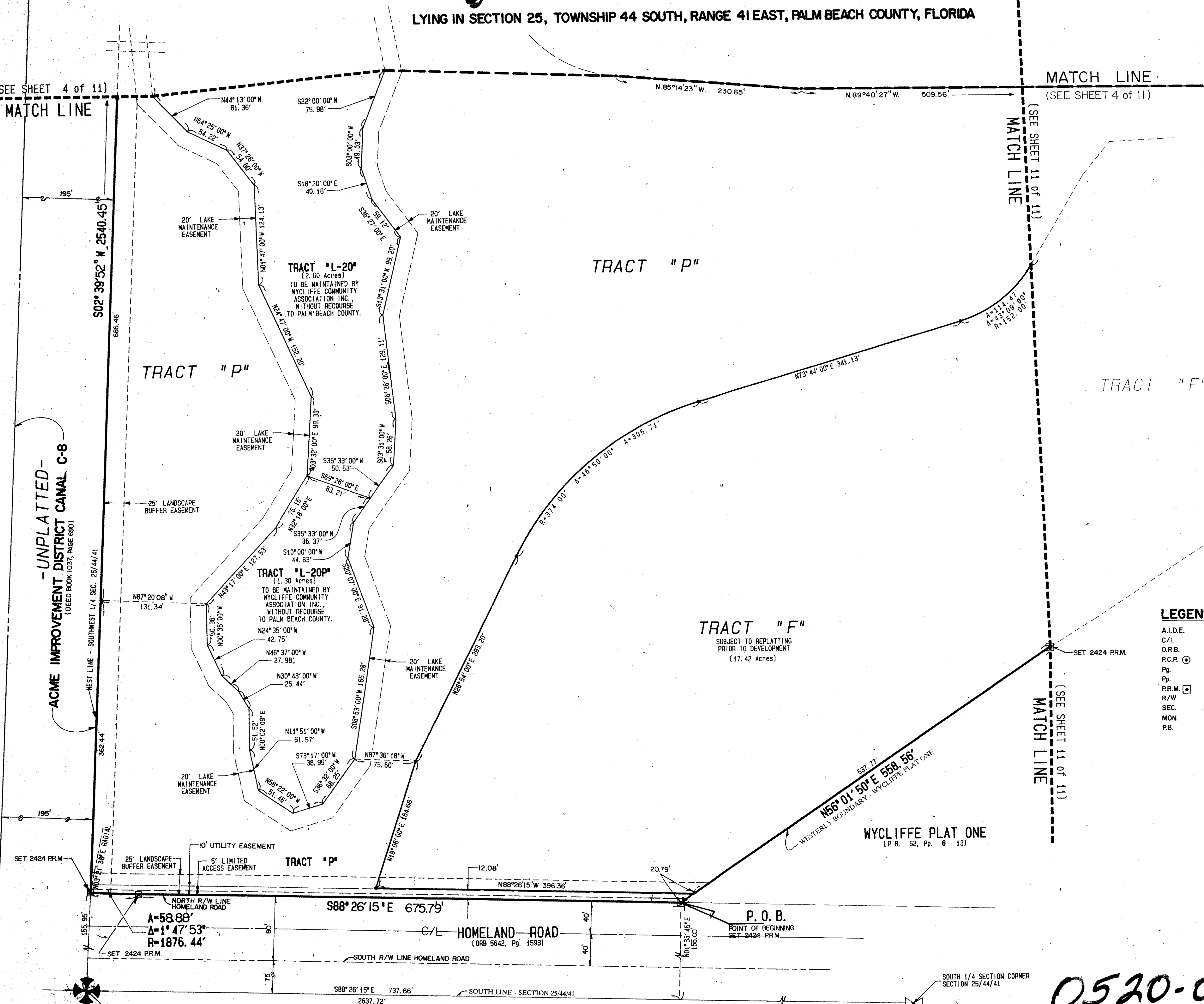
THIS INSTRUMENT WAS PREPARED BY WILLIAM R. VAN CAMPEN, R.L.S., IN AND FOR THE OFFICES OF BENCH MARK LAND SURVEYING & MAPPING, INC., 4152 WEST BLUE HERON BOULEVARD, SUITE 121, RIVIERA BEACH, FLORIDA (407) 842-3234

BENCH MARK
LAND SURVEYING & MAPPING, INC.
RIVIERA BEACH, FLORIDA
WEST PALM BEACH, FLORIDA

Record Plat
Wycliffe Plat Three

DRAWN BY/CADD: [] CHECKED: K.S. DATE: [] SCALE: 1" = 60' SHEET 3 of 11

0520-009



SET 2424 P.R.M.
A=58.88'
A=1° 47' 53"
R=1876.44'

P.O.B.
POINT OF BEGINNING
SET 2424 P.R.M.

SOUTHWEST CORNER
SECTION 25/44/41
COUNTY MON/DISC

SOUTH 1/4 SECTION CORNER
SECTION 25/44/41